

Pro-M™ Electromagnetic Flowmeter



VorTek Instruments Pro-M™ Electromagnetic Flowmeter offers accurate and reliable flow metering of liquids. Using Faraday's law of electromagnetic induction, these meters measure a variety of conductive liquids. Unaffected by the temperature, pressure, density, or viscosity of the liquid, these meters provide a level of measurement stability unmatched among flow metering technologies. The full-bore design does not create a pressure loss and has no moving parts for a maintenance-free design.

The Pro-M design incorporates an assortment of electrode and liner material options to provide application flexibility across industries. Meter sizes are offered for pipe sizes 1/2" through 80". For demanding applications, a high accuracy option of up to $\pm 0.2\%$ of rate meets the most stringent application requirements.

Pro-M meters offer an array of communication and power options. In addition to providing traditional communication methods such as analog output signals, Pro-M meters also offer advanced digital communication options such as Modbus® RTU and HART®.

With the addition of external temperature inputs, these meters can provide a reliable thermal energy (BTU) measurement.

Pro-M™ Advantage:

- Volumetric flow metering of most liquids
- Reliable & maintenance free—no moving parts
- High accuracy - up to $\pm 0.2\%$ of rate
- Meter sizes from 1/2" through 80"
- Pulsed DC magnetic field for zero point stability
- Wide choice of liner and electrode materials
- Bi-directional flow metering capabilities
- Robust, fully welded and potted construction
- Thermal energy metering (BTU) option
- Empty pipe detection feature
- Full-bore design, no pressure loss
- Unaffected by the temperature, pressure, density, or viscosity of the liquid
- Unaffected by particulate solids
- Rangeability up to 45:1
- Temperatures up to 356°F (180°C)
- Remote electronics option available for use in harsh environments or locations with limited access
- Suitable for submersible applications; remote sensor rated to IP68
- Modbus® RTU and HART® communications

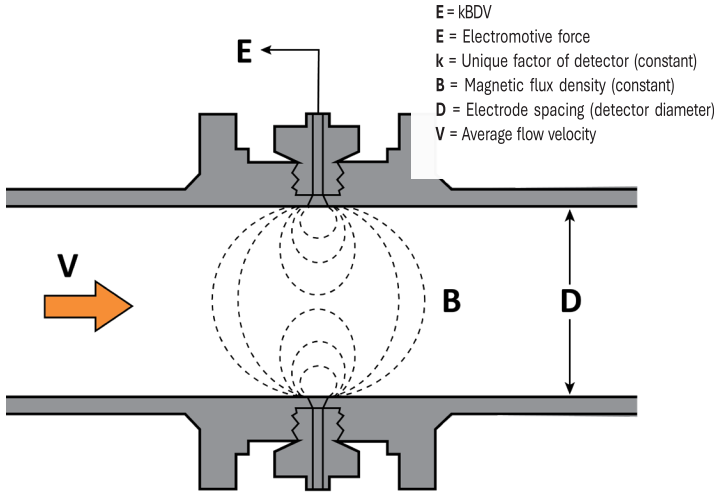


VorTek
INSTRUMENTS
VorTek Instruments, LLC

8475 West I-25 Frontage Rd., Suite 300
Longmont, CO 80504 USA
Tel: 303/682-9999 Fax: 303/682-4368
info@vortekinst.com

Pro-M™ Principle of Operation

Vortex Electromagnetic flowmeters use a phenomenon known as Faraday's Law of Electromagnetic Induction to measure flow. Faraday's Law states that an electrically conductive fluid flowing through a magnetic field will generate an electromotive force (electric signal). The strength of that force is proportional to the velocity of the fluid moving through the pipe. The faster the fluid is moving, the larger the resulting electric signal.



Pro-M™ Volumetric Model

The Pro-M™ flowmeter provides a volumetric flow rate of electrically conductive liquids over a wide range of flow rates.

Pro-M™ Energy Model

With the addition of external temperature inputs, the Pro-M™ flowmeter can provide a reliable thermal energy (BTU) measurement. VorTek Instruments can provide clamp-on or insertion RTD temperature sensors.

Performance Specifications

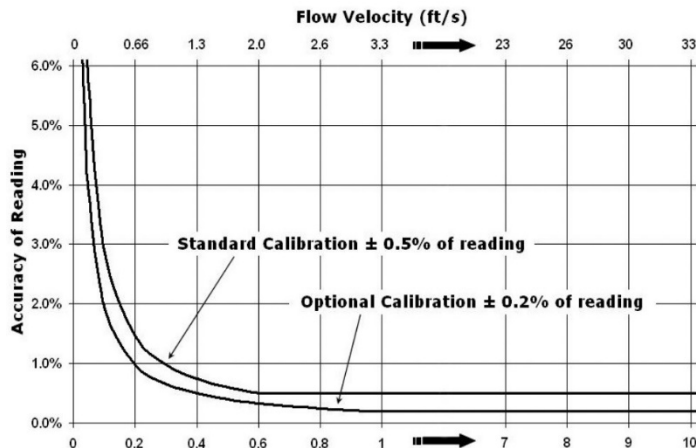
Accuracy

Standard Accuracy Model:

± 0.5% of reading (velocity > 1.97 ft/s)
 Or ± 0.01 ft/s of reading (velocity ≤ 1.97 ft/s)

High Accuracy Model:

± 0.2% of reading (velocity > 3.28 ft/s)
 Or ± 0.006 ft/s of reading (velocity ≤ 3.28 ft/s)



Repeatability

Volumetric Flow Rate.....± 0.1% of rate

Operating Specifications

Any liquid meeting the minimum electrical conductivity of 20 µs/cm or greater.

Ambient Temperature

Ambient Operating: -4 to 140°F (-20 to 60°C)

Power Requirements

DC option: 20-36 VDC

AC option: 110-240 VAC (50/60Hz)

Display

Alphanumeric 3 line LCD digital display

Four pushbuttons for full field configuration

Communications

Analog: 4-20 mA

Two Alarms

Frequency/Pulse

Modbus® RTU or HART® process monitoring

Physical Specifications

Wetted Materials

- Liner, Electrodes, and Grounding Rings (optional)

Liner Selection Table

Material	Line Sizes	Temperature Range
PTFE	½" to 24"	-4 to 248°F (-20 to 120°C)
Hard Rubber	2" to 24"	-4 to 140°F (-20 to 60°C)
Polyurethane	½" to 24"	-4 to 176°F (-20 to 80°C)
PFA	½" to 24"	-4 to 356°F (-20 to 180°C)

Electrode and Grounding Ring Material Options

- 316L Stainless Steel, Titanium, Tantalum, Hastelloy C, Platinum-Iridium
- Electrode and Grounding Ring Material is the same

Sizing Considerations

Piping Conditions

Condition	Pipe Diameters, D	
	Upstream	Downstream
Fully open full bore valve before meter	5D	2D
Reduction before meter	2D	0D
Expansion before meter	10D	2D
Piping tee before meter	5D	0D
90° elbow before meter	5D	0D
Partially open or non-full bore valve before meter	10D	2D

Velocity Range

Maximum velocity, liquid: 32.8 feet/second (30 meters/second)

Minimum velocity, liquid: 0.98 feet/second (0.3 meters/second)

Consult the VorTek Instruments Sizing Program at <https://vortek.sizingapp.com> for easy calculation of flow range.



VorTek Instruments, LLC | 8475 West I-25 Frontage Rd., Suite 300 | Longmont, CO 80504 USA Tel: 303/682-9999 | Fax: 303/682-4368 | info@vortekinst.com | www.vortekinst.com

Flow Range										
Rate	Nominal Pipe Size (in)									
	0.5	0.75	1	1.5	2	3	4	6	8	10
GPM min	0.88	1.3	2.2	4.4	8.8	22	36	88	150	234
GPM max	26	48	79	198	312	796	1246	2800	4979	7779
	Nominal Pipe Size (in)									
	12	14	16	18	20	24	28	32	36	40
GPM min	335	458	599	753	934	1343	1828	2387	2091	3734
GPM max	11205	15255	19918	25210	31123	44816	60979	79691	100825	124469
Rate	Nominal Pipe Size (mm)									
	15	20	25	40	50	80	100	150	200	250
M ³ /hr min	0.2	0.3	0.5	1	2	5	8	20	34	53
M ³ /hr Max	6	11	18	45	71	181	283	636	1131	1767
	Nominal Pipe Size (mm)									
	300	350	400	450	500	600	700	800	900	1000
M ³ /hr min	76	104	136	171	212	305	415	542	662	848
M ³ /hr Max	2545	3465	4524	5726	7069	10179	13850	18100	22900	28270

Turndown

Turndown is application dependent. Consult the VorTek Instruments Sizing Program at <https://vortek.sizingapp.com>.

Product Disposal Information

To ensure environmental safety and compliance, please follow these disposal instructions for the product and its components:

Electronic Components:

This product contains electronics that must be recycled through approved e-waste recycling programs. Electronics can contain harmful materials and should be prevented from entering landfills. Do not place electronics in regular trash.

Metal Parts:

Any metal components can be separated and recycled through your local metal recycling facility.

Packaging Materials:

Recycle or reuse packaging materials such as cardboard or plastics, following local recycling guidelines.

For local disposal sites, refer to:

- Call2Recycle (USA, Canada)
- Earth911 (USA, Canada)
- SERI (International)

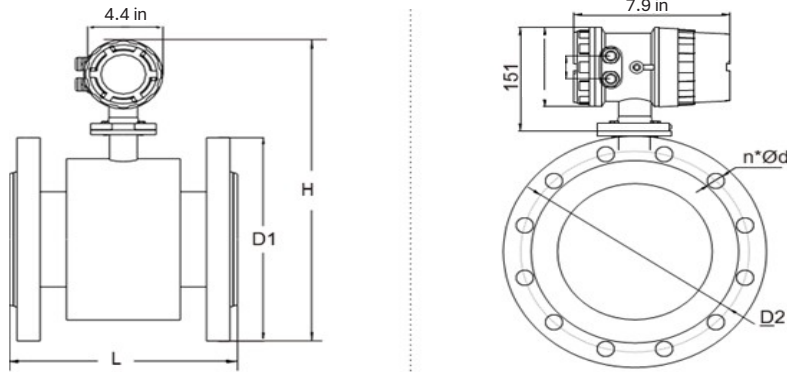
In the USA, for more information, visit:

- EPA's battery disposal guide
- EPA's electronics recycling page

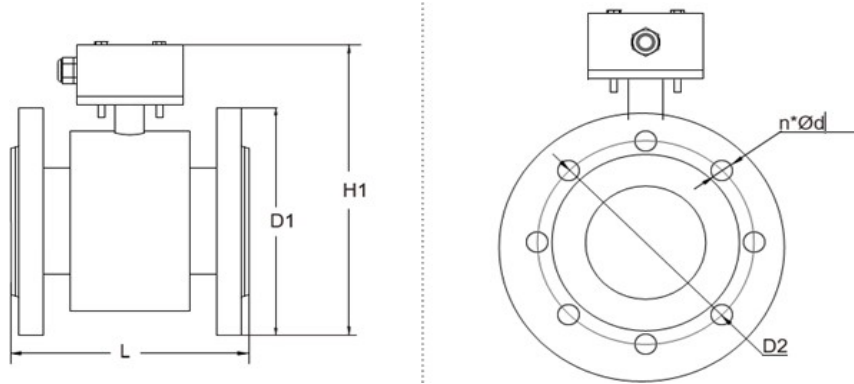
By following these guidelines, you help reduce waste and support environmental sustainability.



Local Electronics



Remote Electronics



Flow Meter Nominal Size	L	H	H1	D1	D2	n*Ød	WEIGHT
							ANSI 150
1/2 inch (15 mm)	7.9 inch (200 mm)	11.8 inch (300 mm)	8.9 inch (227 mm)	3.5 inch (89 mm)	2.4 inch (61 mm)	4 X 0.62 in	22 lb (10 kg)
3/4 inch (20 mm)	7.9 inch (200 mm)	12.2 inch (310 mm)	9.5 inch (240 mm)	3.9 inch (99 mm)	2.8 inch (70 mm)	4 X 0.62 in	23 lb (11 kg)
1 inch (25 mm)	7.9 inch (200 mm)	12.6 inch (320 mm)	9.6 inch (243 mm)	4.3 inch (108 mm)	3.2 inch (80 mm)	4 X 0.62 in	27 lb (12 kg)
1.5 inch (40 mm)	7.9 inch (200 mm)	14.0 inch (355 mm)	10.2 inch (260 mm)	5 inch (127 mm)	4 inch (99 mm)	4 X 0.62 in	29 lb (13 kg)
2 inch (50 mm)	7.9 inch (200 mm)	14.6 inch (370 mm)	10.8 inch (275 mm)	5.9 inch (152 mm)	4.8 inch (121 mm)	4 X 0.75 in	33 lb (15 kg)
3 inch (80 mm)	9.8 inch (250 mm)	15.9 inch (405 mm)	12.2 inch (310 mm)	7.5 inch (191 mm)	6 inch (152 mm)	4 X 0.75 in	44 lb (20 kg)
4 inch (100 mm)	9.8 inch (250 mm)	16.7 inch (425 mm)	13 inch (330 mm)	9 inch (229 mm)	7.5 inch (191 mm)	8 X 0.75 in	51 lb (23 kg)
6 inch (150 mm)	11.8 inch (300 mm)	19.3 inch (490 mm)	15.6 inch (395 mm)	11 inch (279 mm)	9.5 inch (241 mm)	8 X 0.88 in	102 lb (46 kg)
8 inch (200 mm)	13.8 inch (350 mm)	22.2 inch (565 mm)	19.1 inch (485 mm)	13.5 inch (343 mm)	11.8 inch (299 mm)	8 X 0.88 in	144 lb (65 kg)
10 inch (250 mm)	17.7 inch (450 mm)	23.6 inch (600 mm)	19.7 inch (500 mm)	16 inch (406 mm)	14.3 inch (362 mm)	12 X 1 in	177 lb (80 kg)
12 inch (300 mm)	19.7 inch (500 mm)	25.6 inch (650 mm)	21.7 inch (550 mm)	19 inch (483 mm)	17 inch (432 mm)	12 X 1 in	221 lb (100 kg)

Add 5 lb (2.3 KG) for remote electronics



